



MP VITRAGE

GLASS

PRESERVING THE ARCHITECTURAL HERITAGE

MEETING THE MOST DEMANDING REQUIREMENTS

THE COMPANY

GLASS, A MATERIAL THAT CARRIES HISTORY

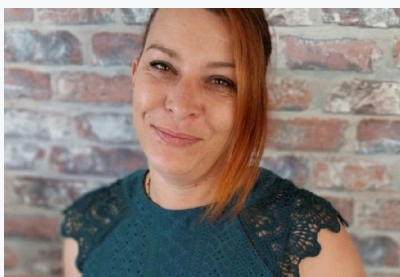
Glass tells us about past centuries. Over time, it has helped shape our architectural landscape. Technical developments in glass manufacturing made it possible to create ever larger formats, thus shaping the structure of joinery and transforming the facades of the past. Glass does not only bring light: it structures, models, reflects the light and mirrors its surroundings. In a word: thanks to its vibration, it brings an architectural ensemble to life.

GLASS, A HIGH-PERFORMANCE MATERIAL

Nowadays, the needs of owners and occupants have evolved. Glass must not only keep its lustre and its original vibration; it must also meet the comfort requirements of today's lifestyles (acoustic and thermal performance) and the standards in force (safety and UV blocking, for example). Combining aesthetics and technique is the challenge our team has chosen to take up, by developing specific tailored solutions.

GLASS, TAILOR-MADE SOLUTIONS

For MP Vitrage, there is no constraint that cannot be answered. That is why we develop and manufacture, in our workshops, the quality and finesse of the glass required. All our glasses are tested for their performance in terms of assembly (feasibility) and safety, in order to find the compromise between aesthetics and technique that will enhance your heritage.



Marie Marcatté
Managing Director



Edward Hennegrave
Sales Manager



Yoan
Workshop Manager, over 15 years of
glassmaking experience

FOUNDERS

MP Vitrage was founded by Philippe and Mathieu, who passed on their expertise and their exacting standards to the team. They remain honorary members of the company.

“Since its creation, the company has spared no effort to develop ever higher-performing products, capable of meeting the most demanding requirements.”

EVERYTHING IS MADE BY HAND IN OUR WORKSHOP. OUR TEAM ADAPTS TO THE CLIENTS' REQUIREMENTS.

THE WORKSHOP

CRAFTSMANSHIP FOR TOTAL QUALITY CONTROL

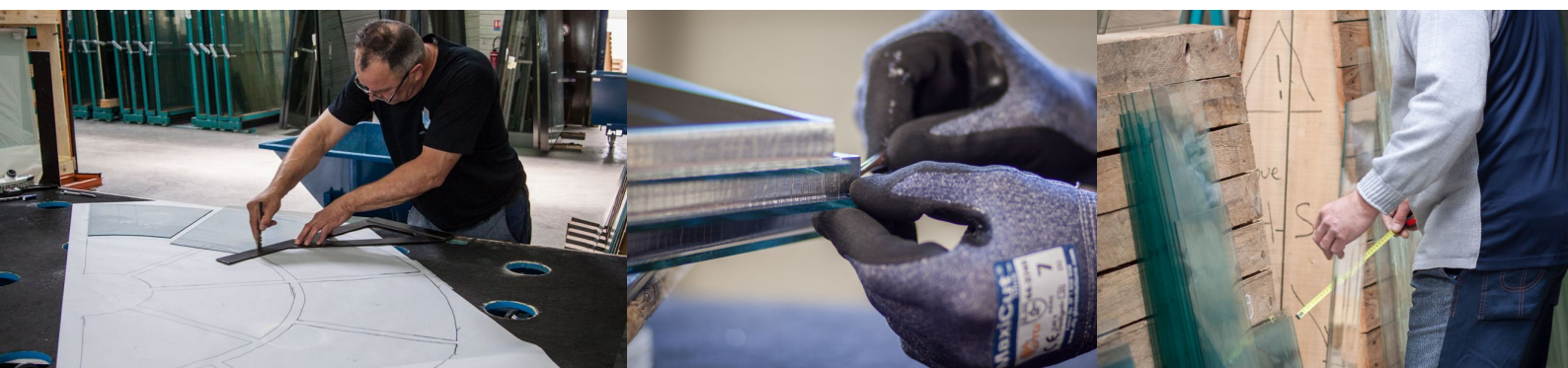
All our glass is manufactured and/or assembled by hand to guarantee a perfect match with the requirements of the project. We are able, for example, to produce remarkably slim double glazing that can be fitted into old joinery. Likewise, our manual assembly techniques allow us to create any type of laminated glass, whatever the distortion of the glass. Finally, quality control is carried out continuously by our team, at every stage of production up to crating.

ARTISANAL KNOW-HOW AND INDUSTRIAL CAPACITY

The workshop was designed to combine flexibility and responsiveness with a significant production capacity. Our organisation and structure thus enable us to fulfil any glass order, from a few units to several thousand. Our strength: being able to meet the most urgent requests.

For complete control of production, our workshop, covering more than 2,000 m², is equipped with:

- automatic and manual cutting tables, depending on the glass;
- several washing machines;
- storage drawers giving us a very wide range on hand and therefore great responsiveness;
- multiple manual assembly stations, depending on the specificity of the glass (double glazing, laminated);
- a building with numerous ovens dedicated to the hot working of glass.



IT IS NOT FOR YOU TO ADAPT TO THE PRODUCT, BUT FOR THE PRODUCT TO ADAPT TO YOUR NEEDS.

Our Main References

- Conseil d'État, Paris (2BDM, Christophe Bottineau ACMH)
- Château de Vincennes (Gabor Mester De Parajd ACMH)
- Archives Nationales, Paris (François Jeanneau ACMH)
- Galerie Dorée of the Banque de France (Perrot & Richard Architectes ACMH)
- Hôtel Lambert, Paris (Perrot & Richard Architectes ACMH)
- Château de Compiègne (Eric Pallot ACMH)
- Palais des Ducs de Bourgogne (Eric Pallot ACMH)
- French Embassy in Lisbon (François Chatillon ACMH)
- Former Abbey of Penthemont, Paris (Lagneau Architectes ACMH)
- Collège royal de Thiron-Gardais (Guillaume Trouvé, heritage architect)

We also have many other references: private mansions, châteaux and residences of character, both private and public...

CONTACT

Rue Michel d'Ornano, 14700 Falaise — France
tel. +33 (0)2 31 41 04 01 · contact@mp-vitrage.fr
mp-vitrage.fr

